



MOSAIC

Quick start guide

Copyright © 2026 DUALZ SOLUTIONS BV

ALL RIGHTS RESERVED

INFORMATION IN THIS DOCUMENT IS PROTECTED AND CAN NOT BE REPRODUCED IN ANY FORM WITHOUT THE PERMISSION OF DUALZ SOLUTIONS BV.

CONTENTS

Introduction.....	3
Installation & Configuration	3
Recommendation	3
Software installation.....	3
Installation steps.....	4
Desktop shortcuts.....	6
MOSAIC Screen Manager.....	6
MOSAIC editor	7
MOSAIC web server	8
Licensing versus Free Mode.....	10

INTRODUCTION

This document describes how to get the Dualz MOSAIC software and running quickly.

A simple configuration with 1 screen is created after default installation.

INSTALLATION & CONFIGURATION

RECOMMENDATION

The software is running in all current windows versions (not being EOL), English version:

Recommended Operating System is Win11 prof 64 bit. A graphics card, like Nvidia Geforce 1050 Ti, P2200, A1000 or better is recommended for best decoding performance.

SOFTWARE INSTALLATION

Perform the following steps to install the MOSAIC software:

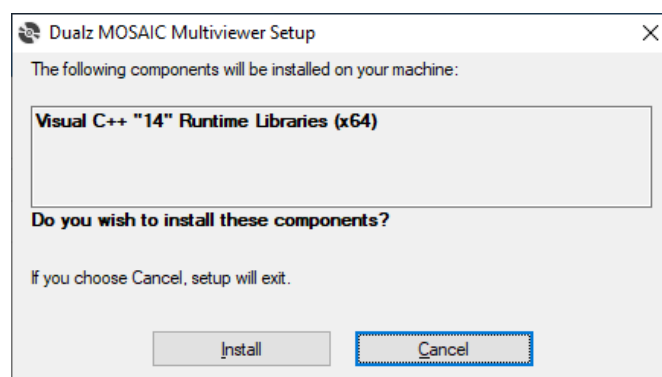
1. Unzip the downloaded package MOSAIC.zip
2. Run "Setup.exe"

Recommended to keep the default installation folders.

NOTE: When using setup.exe, the installation shall, if not already installed, try to install the following required redistributable packages automatically:

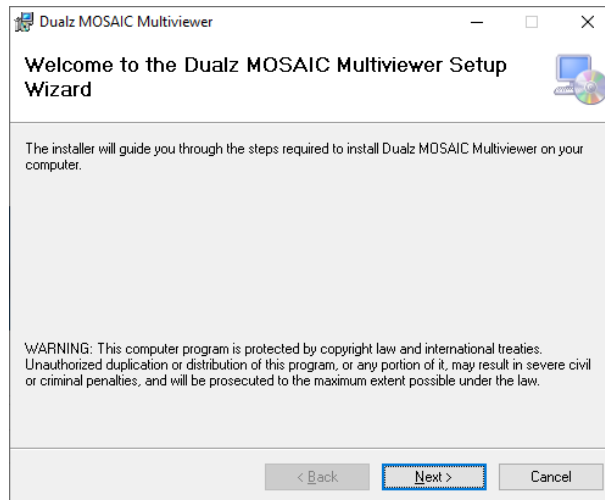
- VC x64, v14 runtime.
- Dotnet runtime 4.7.2

If the following message appears, select "Install"

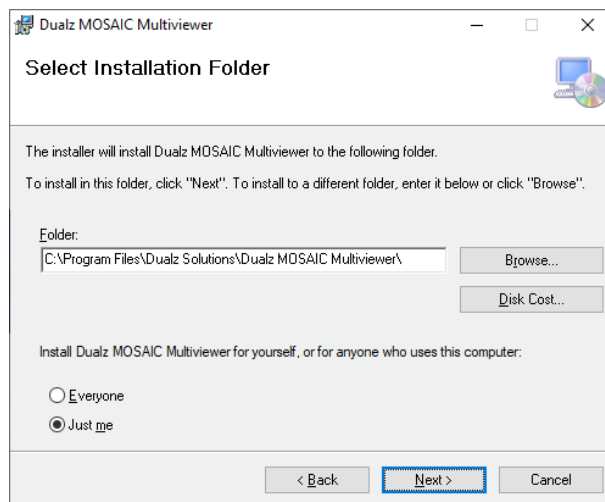


INSTALLATION STEPS

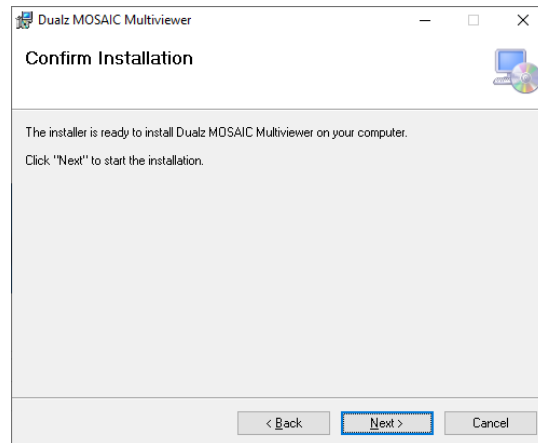
After having installed the pre-requisites, the installation shall continue:



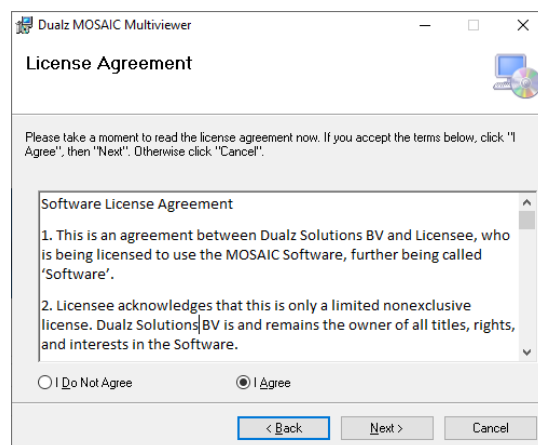
Click "Next"



Click "Next".



Click “Next”



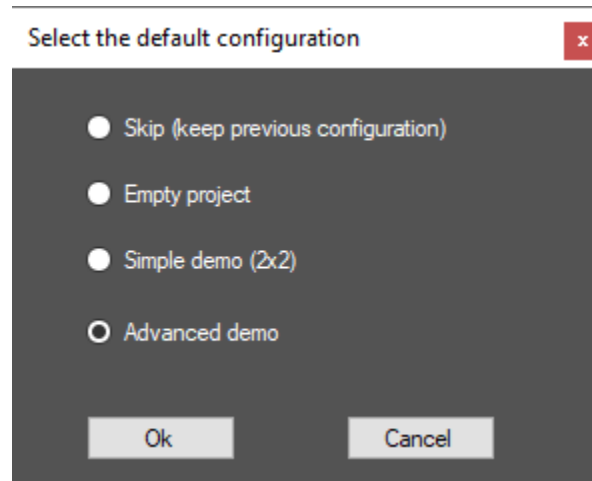
Read the agreement.

Select “I agree” and click “Next”.

Now, the MOSAIC software is installed.

During installation, you can chose to create a demo setup, or not. The following options are available:

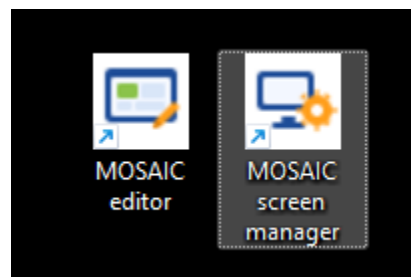
1. Skip (keep previous configuration)
2. Empty projects
3. Simple demo (2x2)
4. Advanced demo



At the end of the installation, you can start the MOSAIC screen manager.
You can also start the MOSAIC screen manager and the MOSAIC editor via desktop shortcuts.

DESKTOP SHORTCUTS

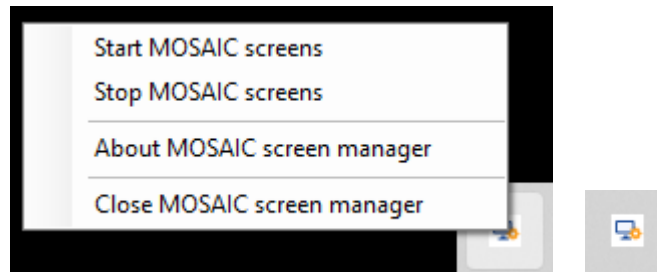
After installation, 2 new desktop shortcuts are created.



- MOSAIC screen manager : Starts the mosaic multiviewer screen manager, see taskbar icon
- Mosaic editor: Opens the editor.

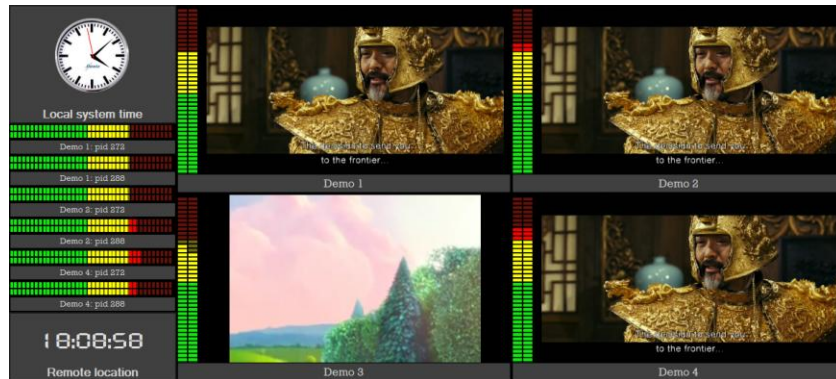
MOSAIC SCREEN MANAGER

The multiviewer screen manager is started via the shortcut on the desktop or via the program's menu under "Dualz Screen Manager". Right click on the MOSAIC screen manager icon in the taskbar and you will see the taskbar menu as shown below:



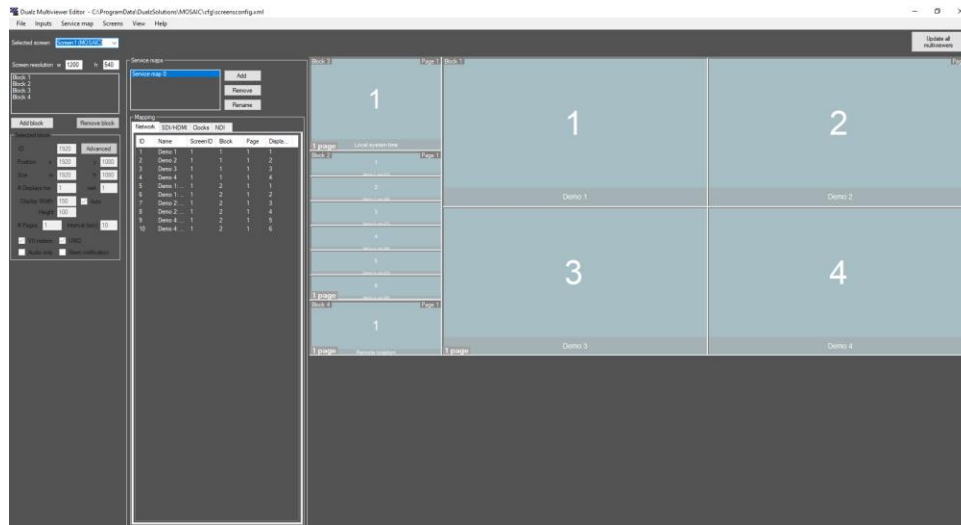
Automatically, all screens are started.

You can stop the screen manager by selecting “Close MOSAIC screen manager” menu item.



MOSAIC EDITOR

You can configure the demo setup, by editing the structure using the editor. Don't forget to select “Update all multiviewers” in order to push the configuration to the multiviewer screen.



You can quickly test one of your streams via MOSAIC editor, for example UDP:

- Open menu “Inputs- Define inputs”
- Double click “4 UDP 235.5.5.5:5556”
- In “Settings-URL”, fill in your url, for example:
 rtsp://18.191.60.12:1935/vod/sample.mp4
 or
 udp://@235.5.5.5:5555
- Select “Save” twice
- Select “Update all multiviewers” (be sure the screen application is running)

Now your stream should be visible. Refer to “Manual MOSAIC editor” for more detailed instructions.

MOSAIC WEB SERVER

By default, in the demo the web server is started by the MOSAIC screen.

In the screens settings you can define the output of the alarms in the screen:

Screen settings

Properties
Screen ID IP Penalty box
Port NDI

Output stream
Encode MV Frame rate
Encoding bitrate Kbits/sec Resolution (WxH) x
 Unicast
IP Port
 SRT (Listener mode)
NIC Port
 Multicast
NIC Port
IP TTL

Web server
 use IP address Port Start server
Email settings
 Use email
Server Port
From Secure
To Interval sec
User
Password
URL webservice (external)
This URL is used as hyperlink in the email body

Pub/Sub interface (MQTT)
IP Port

The web server listens to port 9026. Locally, you can open a browser on:

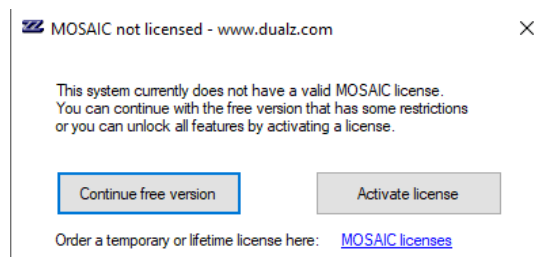
<http://127.0.0.1:9026>

The web browser will show the statuses of your streams. You can access the web server remotely. Note that the port must be forwarded on you router, if accessed from outside your LAN. Also be aware of firewall issues.

<p>1: Demo 1 (trial)</p> <p>Status: Okay (0) Time: 2021-03-24 2:12:08.218</p>	<p>2: Demo 2 (trial)</p> <p>Status: Video loss (401) Time: 2021-03-24 2:12:08.415</p>	<p>3: Demo 3 (trial)</p> <p>Status: Okay (0) Time: 2021-03-24 2:12:08.417</p>	<p>4: Demo 4 (trial)</p> <p>Status: Video loss (401) Time: 2021-03-24 2:12:08.607</p>	<p>5: Demo 1: pid 272 (trial)</p> <p>Status: Audio loss (402) Time: 2021-03-24 2:12:08.406</p>
<p>6: Demo 1: pid 288 (trial)</p> <p>Status: Audio loss (402) Time: 2021-03-24 2:12:08.600</p>	<p>7: Demo 2: pid 272 (trial)</p> <p>Status: Audio loss (402) Time: 2021-03-24 2:12:08.800</p>	<p>8: Demo 2: pid 288 (trial)</p> <p>Status: Audio loss (402) Time: 2021-03-24 2:12:08.975</p>	<p>9: Demo 4: pid 272 (trial)</p> <p>Status: Audio loss (402) Time: 2021-03-24 2:12:09.118</p>	<p>10: Demo 4: pid 288 (trial)</p> <p>Status: Audio loss (402) Time: 2021-03-24 2:12:09.301</p>

LICENSING VERSUS FREE MODE

If you don't have received a license code or dongle yet, you can continue with the free version.



The free version has some visual limitations, and shows popup messages every 5 minutes, but all functions are activated.

When you receive a license key, you can install it via "Activate license", or via the screen application "Help-License-Activate new license" menu.

